

An abstract graphic composed of various colored lines and shapes. It includes a green rounded rectangle in the top right, a blue square in the top left, a yellow circle in the middle left, a blue rounded rectangle in the center, and several other overlapping lines in orange, green, purple, and brown. A small blue square is at the bottom center.

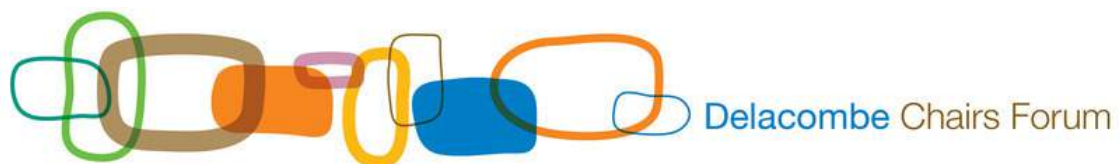
Delacombe

community plan

Achievements

2013-2017

Produced by the Ballarat Neighbourhood Centre on behalf of the Delacombe Chairs Forum,
December 2017.



We gratefully acknowledge funding support from:



CONTENTS

THE DELACOMBE CHAIRS FORUM

DELACOMBE COMMUNITY PLAN 2013 - 2017

FEELING GOOD TO BE A PART OF DELACOMBE

DELACOMBE'S PHYSICAL ENVIRONMENT

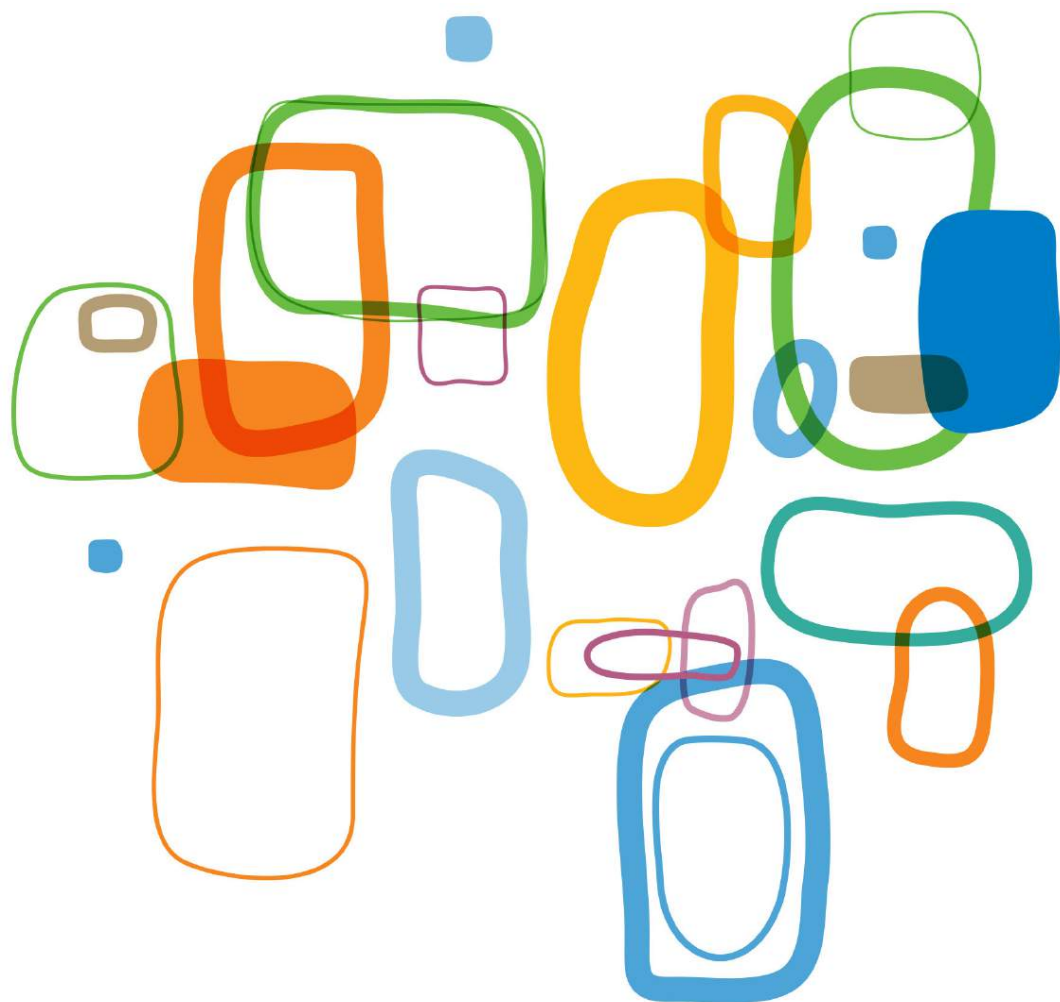
GREAT SERVICES MAKE FOR A GREAT NEIGHBOURHOOD

HEALTHY PEOPLE, HEALTHY DELACOMBE

LEARNING AND EMPLOYMENT IN DELACOMBE

A SAFE PLACE TO LIVE, WORK AND PLAY

THE NEW DELACOMBE STRATEGIC PLAN





THE DELACOMBE CHAIRS FORUM

The Delacombe Chairs Forum (DCF), established at the end of the Delacombe Neighbourhood Renewal in 2013, provides a link between local community members, the City of Ballarat and other stakeholders. The DCF is made up of local community groups and organisations and together they represent a broad range of the Delacombe community. Over the years, members have included:

- Ballarat Community Health (BCH)
- Ballarat Neighbourhood Centre (BNC)
- Ballarat Roller Derby League
- Ballarat Rugby Club
- Ballarat YMCA - Delacombe
- Delacombe Primary School
- Delacombe Uniting Church
- Delacombe Walking Group
- Friends of Doug Dean Recreation Reserve
- Goodstart Early Learning - Delacombe
- Lumen Christi Primary School - Delacombe
- Phoenix P-12 Community College
- The Salvation Army - Delacombe
- VRI Cricket Club.

The group has taken the lead on enacting the 2013 - 2017 Delacombe Community Plan and have coordinated collaborative community events including the annual Delacombe Community Christmas Party, activities at the park at Leawarra Crescent and the Winterfest Market at the Delacombe Stadium among other initiatives.

DELACOMBE COMMUNITY PLAN 2013 - 2017

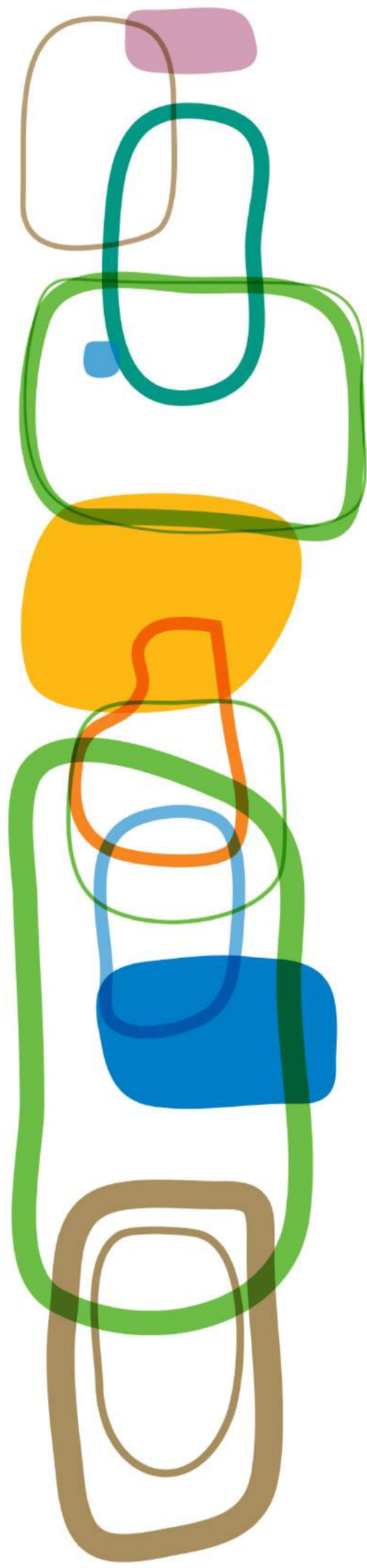
The Delacombe Community Plan 2013 - 2017 (The Plan) was established by government, stakeholders and residents as a road map for future projects, new initiatives and ways of working together in Delacombe. The Plan identifies the priorities the community agreed to work towards and the partnerships and relationships required to bring these to life.

These priority areas included the following:

- Feeling good to be a part of Delacombe,
- Delacombe's physical environment,
- Great services make for a great neighbourhood,
- Healthy people, healthy Delacombe,
- Learning and employment in Delacombe,
- A safe place to live, work and visit.

This report will highlight some of the exciting developments in each of these priority areas, shining a light on some of the projects and partnerships that developed over the last five years.

The work that went into producing these outcomes has contributed to the growth and development of Delacombe and the strength and vibrancy of Delacombe as a neighbourhood.



FEELING GOOD TO BE A PART OF DELACOMBE

What does it mean to feel good about your neighbourhood? For the Delacombe Chairs Forum, this means that:

- Residents enjoy opportunities to participate and contribute to community life.
- People work together to get the job done.
- The aspirations of residents are understood and supported by the City of Ballarat and agencies working with the Delacombe community.
- The community comes together to celebrate its achievements.

There are many examples and ways that agencies and community organisations have contributed to developing a unique Delacombe identity and a sense of pride in the neighbourhood. The following are just a sample of some of the great work that has been done in this area.

DELACOMBE COMMUNITY NEWSLETTER

The Ballarat Neighbourhood Centre, with support from the Victorian State Government and United Way Ballarat, produces and distributes a quarterly newsletter to residents of Delacombe. The newsletter features news from local community organisations and is a key communication tool for the Delacombe Chairs Forum to update the community on progress against the Delacombe Community Plan (2013 - 2017) and the Strategic Planning process which will inform the next Community Plan.

Each edition of the newsletter reaches around 1200 - 1500 households, bringing information that increases residents' awareness of services and events in their neighbourhood and hopefully contributing to a greater sense of 'place' for residents.

'Reading the Newsletter makes me feel like I'm a part of something and when I see all the events and activities that are going on, I feel proud to live in such a fun and vibrant neighbourhood.'



YMCA ACTIVATION OF THE DELACOMBE STADIUM

The Delacombe Stadium is utilised 7 days a week by a range of community user groups including:

- Bahai Community
- Ballarat Roller Derby League
- Carisbrook Football Club
- Delacombe Primary School
- DOTS (Developing Other Talents and Skills)
- Filipino Basketball Association
- Lumen Christi Primary School
- Royal Park Football Club
- Street Soccer
- Vikings Soccer Club
- YMCA Outside School Hours Care

There were a number of community events and celebrations in the stadium over the past four years including the Delacombe Community Christmas Party, birthday parties, indoor movie night, hoop jam basketball event, trivia nights, school performances, fun skate sessions, blue light roller disco, basketball tournaments, Winterfest Market and even a wedding!



WINTERFEST MARKET

This annual event hosted by the YMCA since 2015 has grown to see a crowd of over 1500 people in 2017 including over 40 stallholders, five entertainers and one "Yeti creature" hailing from the Himalayas! The stadium was a sea of people, enjoying the music, supporting local market stall holders and grabbing a bite to eat. The event is a very successful community engagement tool welcomed by the locals and supported widely from across Ballarat.



DELACOMBE'S PHYSICAL ENVIRONMENT

By improving the physical environment of a neighbourhood, residents' sense of pride, feelings of safety, as well as the functionality of the neighbourhood increases. When things are maintained, attractive and safe, people are more likely to utilise outdoor community spaces. This has certainly been the case in Delacombe, especially when it comes to the Doug Dean Recreation Reserve (Doug Dean Reserve), which has been a focal point for the efforts to improve the physical environment.

Actions taken over the last five years to improve Delacombe's physical environment have focused on the following vision statements:

- People take pride in Delacombe's parks, playgrounds and community amenities.
- Delacombe is an aesthetically pleasing and safe place to live, work and play.
- Ballarat City Council works with the community and other partners to further improve streetscapes and public spaces.

DOUG DEAN RESERVE

The Doug Dean Reserve was transformed through the significant work of The City of Ballarat and the Friends of Doug Dean Reserve, creating a great place for local residents to walk, play sport, hold community events or simply feel good enjoying the wetlands and bird life. They have lead the process of tree planting and revegetation that will help provide shade, stabilise the banks and prevent erosion.

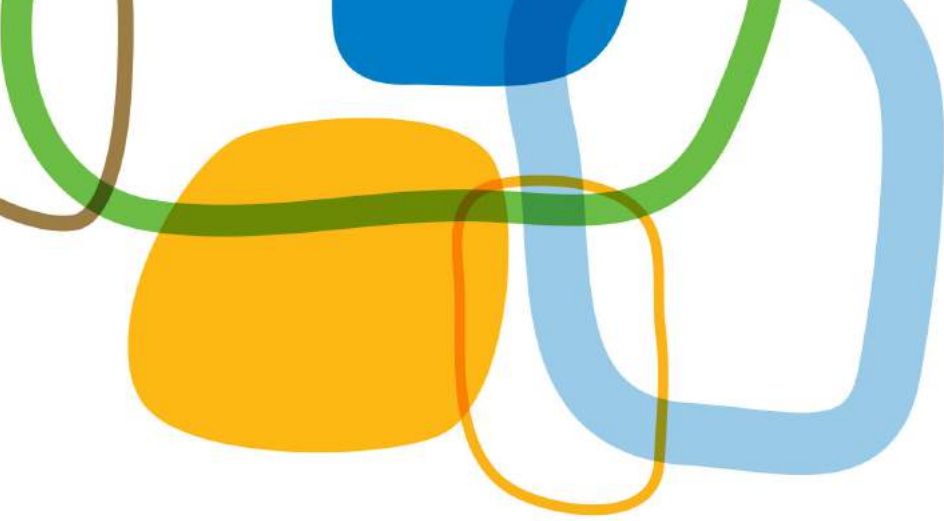


Volunteers planting trees at Doug Dean Reserve.



The Friends of Doug Dean Reserve and local residents at a tree planting session.





PUBLIC ARTWORK AT THE WETLANDS

The wetlands at Doug Dean Reserve were enhanced by a major public artwork commissioned by the City of Ballarat. The design (pictured below), developed by artist Chris Methner, features floating islands that provide habitat for wildlife through vegetation and bird boxes. The art project highlights the role of public art in creating community pride.

At its launch in June 2014, Uncle Bryon of the Wathaurong Aboriginal Cooperative conducted a smoking ceremony. He commended the work to transform the wetlands and promote habitat through several plantings at the Doug Dean Reserve.



Some of the bird houses are lit at night.



The smoking ceremony at the launch.



GREAT SERVICES MAKE FOR A GREAT NEIGHBOURHOOD

The focus of the Community Plan was to ensure that:

- Residents enjoy easier access to and greater confidence in government and community services.
- Delacombe's community facilities are home to a coordinated, diverse and responsive range of programs and supports.
- People engage with government, services and organisations to ensure their needs and those of their families are met.
- People experience the benefits of ongoing and productive conversations between state and local government.

The neighbourhood has seen a significant increase in services, including the following new or improved services.

OUTREACH LIBRARY

Every Friday since 2013, the Ballarat Library sets up their books indoors and provide an incredible service at the Delacombe Salvation Army. The Salvation Army supply delicious coffee and cake and a place to sit, relax and read the newspaper. The Library runs from 10 to noon with Children's Storytime for pre-schoolers starting at 10.30. During this time there are stories, singing and craft activities.

In 2013, the Ballarat Neighbourhood Centre, United Way Ballarat, and the SES put on a special event for book week where children and their families could explore the big SES truck as well as enjoy storytime with library staff.



Storytime is the main reason Glenys uses the Library, as she looks after children from the Sudanese Community and thought it would be a great way of accessing different books for the children. "They love it (storytime)," Glenys says. "They love the books as well, choosing their own books to borrow."

Glenys says that to her, being a part of Delacombe and the Outreach Library means "Feeling good, accepted, (having) a comfortable place to come, somewhere welcoming, take something home, and something to look forward to coming to."



GROWTH OF SERVICES IN THE DELACOMBE NEIGHBOURHOOD

The general burgeoning of services and community groups in Delacombe since 2013 has enhanced the quality and breath of services and community organisations to provide for the needs of Delacombe families.

Community Gardens

Primary

Early Childhood Education

Schools

Roller Derby

Community

Employment Support

Community Health

Cricket

Events

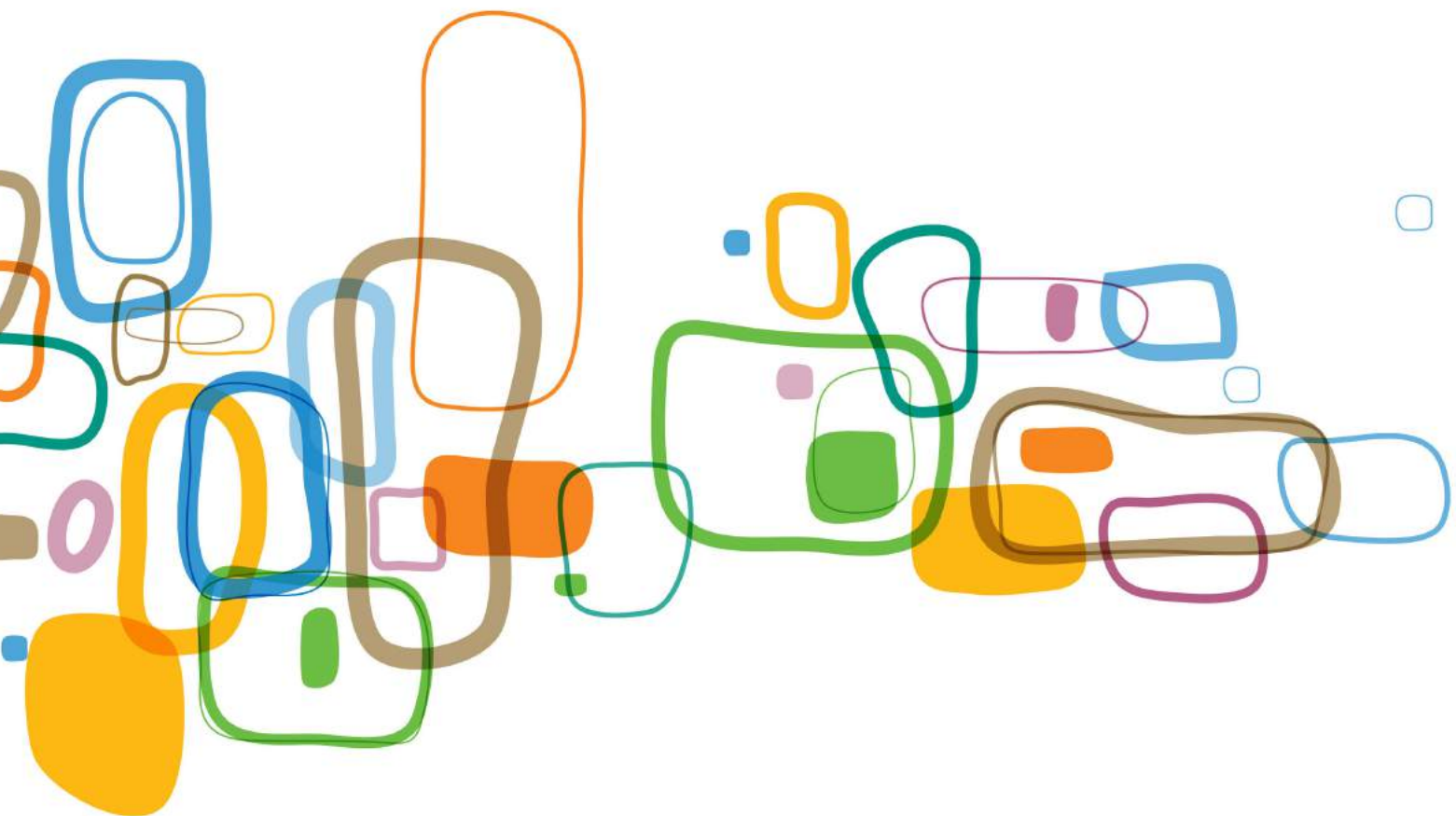
Secondary School

Adult Education

Walking Groups

Rugby

Library



HEALTHY PEOPLE, HEALTHY DELACOMBE

The Plan seeks to build a community that values an active lifestyle and community connections, thereby fostering mental and physical well-being for its residents.

The plan supports the following:

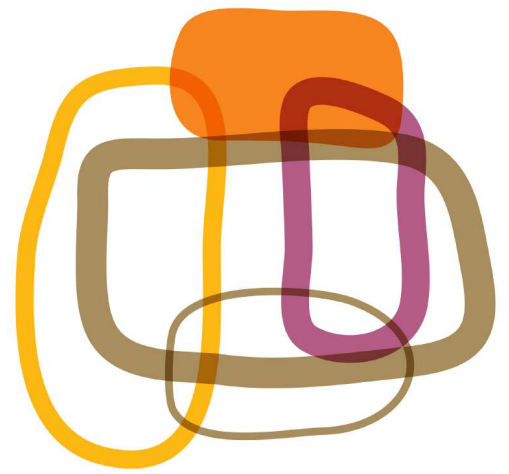
- Affordable and relevant health and wellbeing programs and services are known and accessed by residents.
- Local families more readily engage in community life, events and activities.
- Delacombe is known as a walkable community.
- Participation rates increase in a diverse range of recreation and leisure pursuits.

The following initiatives highlight some of the ways the community addressed these key goals.

DELACOMBE WALKING GROUP

Delacombe residents came together to improve their fitness and get to know their neighbours through the formation of a walking group casually known as the 'Delacombe Walkers.' The group meets three times a week at the Doug Dean Reserve and completes short, medium or long walks - all that can be done in an hour or less.

Members have found that they get much more than exercise by being a part of the group. The Walking Group also supports other local initiatives such as the YMCA Morning Tea and the Delacombe Chairs Forum by doing letterbox drops. News comes in the form of flyers for special events, like the popular annual Delacombe Community Christmas Party.



"Meeting new people and having lively conversations whilst exercising is a wonderful way of getting fitter and my doctor is really pleased that I am making the effort."



The Walking Group is supported by the Ballarat Neighbourhood Centre, the YMCA and the City of Ballarat.



...a with a group makes
...safer and enjoying
...conversations
...feeling lonely

COMMUNITY GARDENING AT BALLARAT NEIGHBOURHOOD CENTRE

The Ballarat Neighbourhood Centre (BNC), based at the Ballarat South Community Hub in Tuppen Drive, Sebastopol, started developing its community garden in 2014. Michelle Whyte, Executive Manager of the Ballarat Neighbourhood Centre said, "The collaborative efforts of many people and organisations have contributed to this new community garden space providing a place to congregate and encouraging a sense of community pride as well as promoting healthy lifestyles through gardening activities."

The garden includes a sensory garden, wicking beds, mosaic artwork, a paved outdoor area with shade sails and picnic table, bench seating and a native garden.

The BNC's Literacy through Community Gardening class was involved in the garden every step of the way, from planning and making these beautiful mosaic stepping stones to hosting local children's activities such as the Teddy Bears' Picnic.



The garden's supporters are too many to name, but major funding partners include the City of Ballarat, Acciona Energy, Regional Arts Victoria and the United Way Ballarat. In-kind support included the Ballarat Permaculture Guild and macGARDENS.

BALLARAT PERMACULTURE GUILD



The Ballarat Permaculture Guild provided their expertise and guidance in teaching community members how to construct wicking beds at the Ballarat Neighbourhood Centre Community Garden space. The guild is a group who create opportunities for members of the community to learn about permaculture and share practical skills.

YMCA'S COMMUNITY GARDEN

The development of the community gardens surrounding the YMCA buildings at Doug Dean Reserve has created community connectedness for groups of adults with a disability, local secondary students and private residents through gardening activities. The garden gives people a place to grow produce, relax and stimulate their senses.



BALLARAT COMMUNITY HEALTH

From its very beginnings Ballarat Community Health (BCH) has been committed to enhancing the health and wellbeing of the local community. Today BCH provides a wide range of affordable health and social support services and programs in a number of locations across Ballarat to assist those who live and work in Ballarat and surrounds to achieve the best possible health and wellbeing.

The Sebastopol site, located at 260 Vickers Street, is easily accessible and well utilised by Delacombe residents. A busy General Practice clinic operates out of the Sebastopol site, alongside a range of allied health services including podiatry, physiotherapy and exercise programs, dietician, diabetes education, chronic disease management and counselling services.

A \$2.5 million refurbishment of the site was completed in 2016. This included an upgrade to the GP clinic, the addition of an assessment space for the physiotherapist and exercise physiologist, a children's play area, a commercial kitchen, a single point of entry, an additional meeting room and a refurbished multipurpose room. The meeting room and multipurpose rooms are available for public hire.

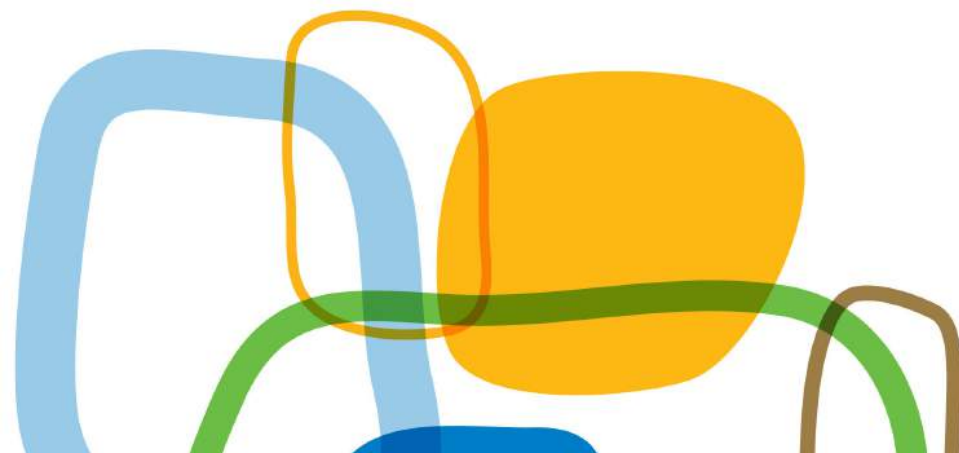


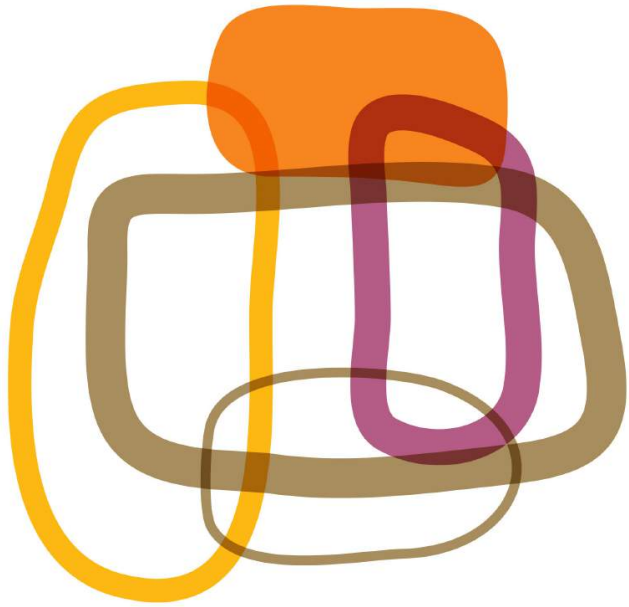
OTHER COMMUNITY EVENTS AND ACTIVITIES

The Delacombe Chairs Forum laid the foundation for a culture of collaborative community events. These events often include media coverage and reporting to encourage good news stories about Delacombe; enhancing community pride and people's sense of belonging.

Highlights include:

- **Delacombe Chairs Forum (DCF) 1st Birthday Party**, attended by over 150 people and featuring reports from DCF Chairperson Stacey Oliver (YMCA Delacombe) and Councillor Des Hudson (City of Ballarat).
- **Neighbour Day** is now an annual event held in March. Previous events include Pancakes in the Park and a Park Play (pictured right), which brought local families together.
- Local community members enjoyed a free **Movie Night** screening of 'Oddball' at the Delacombe Stadium at Doug Dean Reserve in April of 2016. The night included free popcorn, hot drinks and a sausage sizzle.
- **National Tree Day** was observed by a group at Ballarat Neighbourhood Centre by planting a fruit tree in the community garden space.
- YMCA's **Winterfest Market** has grown each year, with the event in 2017 being part of the broader City of Ballarat Winter Festival program.
- The **Teddy Bears' Picnic**, hosted by the Ballarat Neighbourhood Centre, is now an annual part of the City of Ballarat Children's Week in October.





DELACOMBE COMMUNITY CHRISTMAS PARTY

Since 2013, this annual event has been sponsored by the Delacombe Chairs Forum and is a collaborative effort that includes contributions from local schools, the Sebastopol Fire Brigade, the Salvation Army, Uniting Church, YMCA, Ballarat Neighbourhood Centre, and the SES.

Highlights include a visit from Santa and performances from the Phoenix P-12 Community College Band and Choir and a combined Delacombe and Lumen Christi Primary School choir.



The Delacombe Christmas Party has grown over the years and regularly features a visit from Santa



Santa arrives in style aboard a shiny red CFA Fire Engine.

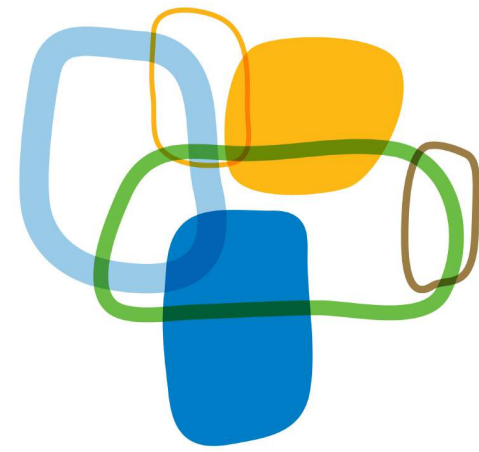
"My friends and I love to come to the Delacombe Christmas Party - we see our friends and everyone we know -- and we love when Santa arrives!"



LEARNING AND EMPLOYMENT IN DELACOMBE

In terms of learning and employment, the Plan focused on the following priorities:

- Delacombe people enjoy increased access to responsive local learning, training and employment opportunities.
- Local children and young people are supported through critical education transitions.
- Children and young people are engaged in their education and have pathways to further study and meaningful employment.
- Parents value and support their children's education.
- Delacombe people have access to local, diverse and flexible lifelong learning opportunities.
- Education providers are connected and work collaboratively to deliver community priorities for education and learning.



THE BALLARAT NEIGHBOURHOOD CENTRE

The Ballarat Neighbourhood Centre (BNC) had outgrown their building when the opportunity arose in 2013 to relocate to what is now known as the Ballarat South Community Hub, a building shared with the Phoenix P-12 Community College Secondary School. As a Learn Local provider, the Ballarat Neighbourhood Centre brings local adult education opportunities to Delacombe and the Ballarat South West area.

BNC's Adult Community and Further Education (ACFE) supported pre-accredited training options include adult literacy and numeracy programs, English as a Second Language, industry specific taster courses, IT skills and personal development opportunities. The BNC hosts Registered Training Organisations that provide a range of accredited training packages including Certificates in Childcare, Aged Care and Hospitality.



THE WORK AND LEARNING CENTRE

The Next Steps Work and Learning Centre (WLC), a program developed by the Brotherhood of St. Laurence, was opened in Ballarat in 2013. The WLC operates from the Ballarat South Community Hub, serving all of Ballarat with a particular focus on providing support to Ballarat's public housing tenants.

Work and Learning Advisors (WLAs) provide one-on-one support to job seekers, addressing complex barriers to employment. WLAs offer job search support, training opportunities, support moving into work, individualised personal assistance and post placement support.



Work and Learning Advisor Jan Simmons helped Rebecca Bol to secure a job with the City of Ballarat as a Home and Community Care Worker.

"It is difficult for people who have been out of work for any length of time to get back into work, and often employers say they find it hard to get good staff. The Program builds a bridge to help people get advice, work experience, and gain skills and confidence and to link them in with local employers and workplaces." - Tony Nicholson, BSL

Nyalam, a long time resident of Delacombe, came to Ballarat 12 years ago from South Sudan. She started with the Work and Learning Centre in 2015 after completing her Certificate III in Aged Care. Through BNC and the WLC, she participated in training to develop her computer skills, got one-on-one support from a Work and Learning Advisor and met other job seekers who could relate to the struggle of finding work. She built her confidence; getting more interviews and becoming more and more comfortable facing the interview panel. She now works two jobs, one as a Personal Care Worker and one with the City of Ballarat providing Casual Relief Childcare.

ENTERPRISING COMMUNITIES

On Monday and Tuesday of each week there is a buzz in the kitchen in the Ballarat South Community Hub as the social enterprise warms up for the day.

The Hub is located in the grounds of the Phoenix P-12 Community College. The Enterprising Communities project, supported by the City of Ballarat, was hatched by the Ballarat Neighbourhood Centre to provide people experiencing long term unemployment who are isolated within the community to have an experience of work and community engagement.

Participants in the project come from English speaking and non-English speaking backgrounds. They work efficiently together as a team to gain experience and skills in all aspects of kitchen operations. A highlight of the program has been the catering for 120 people for a Refugee Week celebration in Ballan when the program was only 5 weeks old.

Food favourites for customers include sausage rolls, falafel and quiche, and of course, desserts.

New developments for the coming year include the installation of a coffee machine and an increased utilisation of the community garden as a source of produce. Much of the program's current ingredients come from generous donations from Second Bite.



"We are here because we want to work, we come to Australia to do something with our life for our family. This course makes me strong, confident and proud!"

- Enterprising Communities participant



The first two rounds of participants have completed their 16 weeks in the kitchen and gained a raft of employability skills.

Feedback from participants tells us they are feeling a more positive connection to their community and more confident in their ability to contribute to the workforce. Here is what they like about the program

"Laughing and singing while we work."

"Learning recipes and how to cook them."

"Improving my English."

"Working in a team."

"Getting ready to work a job."

DELACOMBE PRIMARY SCHOOL

Delacombe Primary School is a community of learners working in a warm, positive, friendly and engaging environment. The school continues to grow in enrolments, with a current number of 330 students in attendance, averaging a 10% increase in enrollments each year.

Delacombe Primary School has a significant focus on literacy and numeracy. The talented, professional staff are very committed to providing engaging and purposeful teaching and learning opportunities for all children. Some examples include the whole school Writer's Festival, Western Bulldogs Reading program and the Boys, Blokes, Books and Bytes (B4) program.



The school recognises and receives outstanding support from its parent community on a variety of levels. A strong and committed School Council has played a significant role in policy and planning and the energetic "Parents and Friends" group organises a large number of successful projects annually. These events include our Father's Day and Mother's Day stalls and other significant fundraisers for the school.

In 2017, the Delacombe Primary School will receive a \$2.35 million dollar facility upgrade. Buildings works have commenced and will provide the school with permanent modern buildings that are ready for 21st century learning.

LUMEN CHRISTI PRIMARY SCHOOL



Our teachers place students at the centre of the learning process. We share the belief that effective learning takes place when positive relationships are developed in an atmosphere that balances challenge with support. Our 332 students learn in an environment where trusting relationships allow for risks to be taken and mistakes to be made and learnt from.

Promoting students' social and emotional skills is critical to improving their academic performance and their success in life. At Lumen Christi we have developed the acronym SHINE as our approach to Positive Behaviour in School. SHINE is a proactive school-wide system of support for defining, teaching, and supporting appropriate student behaviours to create a positive school wide environment.

Being **Safe**
Having Respect
Including Others
Never giving up
Excellence

All of the above is achieved in a partnership between staff, students and parents. It is the quality of this partnership that we are proudest of.

Our school facilities will be greatly enhanced with the completion of a major \$1.35-million-dollar refurbishment of 8 learning areas in December 2017.



Literacy, numeracy and ICT are integrated into the teaching and learning program, and a wide range of VCE and VET studies are offered to our senior students, including VCAL provision, and access to School Based Apprenticeships.

There is an emphasis on developing optimistic, resourceful and resilient global citizens for the future.

PHOENIX P-12 COMMUNITY COLLEGE

Phoenix P-12 Community College is situated in the southwest of Ballarat and provides an early years to adulthood learning and wellbeing centre. The College services a wide area, both urban and rural, with the school community consisting of a diverse range of families from various socio-economic backgrounds.

The school prides itself on the educational opportunities delivered for the students of today as we foster the development of socially respectful and responsible global citizens of tomorrow. Our aim is to empower our students to strive for success and excellence in their educational, vocational and personal pathways. Through a proactive approach to learning, we ensure that emotional wellbeing is fostered within every child and that they leave the College as active, positive members of the community.

The College provides a comprehensive and inclusive curriculum with a range of pathways to meet the interests and needs of a wide variety of students.



The College values of Respect, Responsibility, Integrity, Cooperation and Excellence guide our fundamental principles of action across all areas of the school.

We are dedicated to building students' potential for success and wellbeing through fostering high level expertise in all aspects that relate to Habits of the Mind. We pride ourselves in providing an environment that is conducive to each child achieving their personal potential. Student wellbeing is seen as critical in empowering students with the social and emotional competencies to experience success and happiness in their lives.

The College operates across three stages of learning (Foundation - 6, Years 7-9 and Years 10-12) to ensure the development of all students, academically and socially. We believe that quality relationships based on inclusiveness and mutual respect between parents, teachers and students are the key to us achieving our purpose.

A SAFE PLACE TO LIVE, WORK AND PLAY

What's important for Delacombe residents when it comes to safety?

The Plan focused on:

- People move about Delacombe with confidence and as a result are more involved and engaged in community life.
- Delacombe's public spaces, footpaths, roads and amenities are well planned and maintained.
- People show mutual respect for the safety and wellbeing of other residents and understand their shared responsibilities to contribute to a safer community.
- Authorities have a visible and positive presence in Delacombe.

Some of the safety achievements highlighted here are the Delacombe Walking School Bus, projects completed through the Public Safety Infrastructure Fund and initiatives around violence prevention including White Ribbon and 1 Million Stars to End Violence.

THE WALKING SCHOOL BUS

The Delacombe Community Walking School Bus, which is a collaboration between The Salvation Army and Delacombe Primary School, won the City of Ballarat's Improving Community Safety Award and the Community Safety Prize of \$1,000 in 2016. The Delacombe Community Walking School Bus known by the local children as the Magic School Bus ensures local children get to school on time and safely.

The initiative began in June 2016 starting with five and growing to 20 children. The Walking School Bus is run by local volunteers, operating every school day; rain, hail or shine. Volunteers commence their journey from Delacombe Primary School and cover the streets of Leawarra Crescent, Rorey Street, Jordan Avenue, Manna Boulevard, Greenhalghs Road and back to the school.

On every occasion there are two adult walkers on the journey who generally start around 7:45 am and get to school by 8:30 am to join the Breakfast Club program at the school. The initiative has certainly helped in lowering the absence rate from school and encouraged students to walk to school in any weather.



PUBLIC SAFETY INFRASTRUCTURE FUND

After a number of years of advocacy, the City of Ballarat, with support from the Delacombe Chairs Forum, was successful in gaining a Public Safety Infrastructure Fund grant from the Victorian Government's Department of Justice. Together with contributions from the City of Ballarat, the grant funded upgrades to the facilities at Doug Dean Reserve. Projects ranged from providing electricity to the BBQ shelter, improving lighting and seating, and, importantly, the installation of a public toilet. This has further optimised community use of the area in and around the playground and the family BBQ shelter.



As part of the grant process, before and after community surveys were conducted with local Delacombe community members. The survey indicated an increase in the community use of the Doug Dean Reserve following the project delivery, including events and activities in the evening.

SAYING 'NO' TO VIOLENCE

Delacombe Chairs Forum members, including the Ballarat Neighbourhood Centre, have supported initiatives such as 'White Ribbon Day' and '1 Million Stars to End Violence' to help create more community awareness around violence.

The BNC ran workshops where community members could come and contribute to the "1 Million Stars to End Violence" project, a love and peace filled project that brought people together around the world to say "No" to all forms of violence. In 2015, Ballarat wove well over the goal of 33,500 stars which formed a beautiful display at Stockland Wendouree Shopping Centre at Christmas time.

WHITE RIBBON DAY

Since 1999, 25 November has been named White Ribbon Day, the International Day for the Elimination of Violence Against Women.

Over a number of years the Ballarat Neighbourhood Centre has recognised White Ribbon by displaying photographs from the exhibit "From Behind Closed Doors." The photographs portray people's experiences of, and recovery from, family violence.



DELACOMBE STRATEGIC PLAN 2018 - 2019

Following the completion of the 2013-2017 Delacombe Community Plan, members of the Delacombe Chairs Forum have considered how we can best serve the community over the coming years. We recognise that things have been changing pretty rapidly in and around Delacombe and that people living and working in the community want to be able to shape what future changes look like.

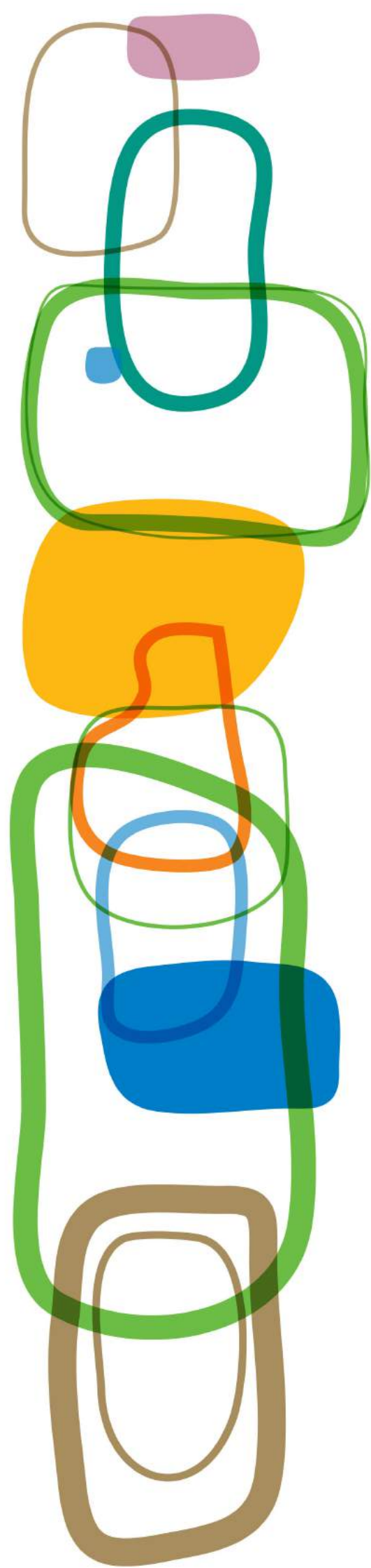
With that in mind, the Delacombe Chairs Forum uses our influence to get people and organisations working on projects that make a positive impact on the lives of people living, working and learning in Delacombe.

To do this effectively we focus on:

- Finding out what matters most to local people
- Helping stakeholders create smart responses to local problems and priorities
- Advocating on behalf of the community so that it attracts a fair share of resources.

Every two years the Delacombe Chairs Forum will gather information about what people love about Delacombe, and the things that the community would most like to see improved. Although we won't have the capacity to respond to all of the issues, we will seek to make a difference around the top priorities raised by community. Once the priorities are identified we work with the community and relevant stakeholders to develop and implement creative solutions.

Because we have good connections with community and the agencies that provide services here, we will also look to respond to big issues and opportunities as they emerge. We'll monitor how successful we've been and keep the community informed of progress.



HERE'S WHAT WE HEARD IN 2017

The Delacombe Chairs Forum staged a range of activities in 2017 so that we could get a better understanding of what people would like us to work on. These activities included:

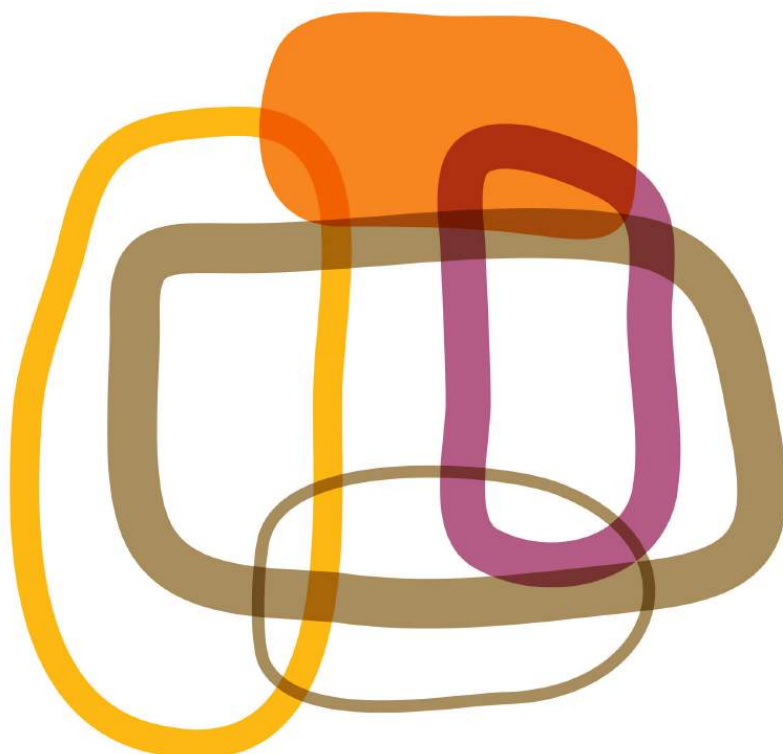
- Working with over 100 students from Lumen Christi and Delacombe Primary Schools to develop a list of 'crazy ideas' for Delacombe,
- 135 people completed a community survey,
- Graffiti walls were hosted at community sites where people could post their comments, and
- Chatting with people at focus group workshops.

The majority of people indicated that they really liked Delacombe and generally feel connected to their community. People connect in a variety of ways including through; schools, the Community Hub, community events, the library, faith based organisations and sports. Notwithstanding this, it is important to note that there are people within the community who stated that they would like to be better connected.

On the whole, participants were relatively satisfied with the facilities and services in Delacombe. People highlighted the benefits of the expanded offering of services at the new Delacombe Town Centre as well as Doug Dean Recreation Reserve being highly valued by the community.

In terms of future improvements, people focused on these issues:

- Improving connectivity across the community – practically speaking this means enhancing walking tracks, footpaths and public transport,
- Safety is important and public places should be well lit and feel clean and accessible,
- Creating open, attractive, interesting and active community spaces for people to come together (adding new facilities at Doug Dean Recreation Reserve is a key part of this), and
- People are keen for more community events, markets and activities.





HERE'S WHAT WE'LL BE DOING IN 2018

A number of people and agencies involved in the Delacombe Chairs Forum have put their hand up to lead responses to these local priorities. By March of 2018, we will have developed ideas for each of these priorities and be working with organisations and people who can get things happening. We will keep people informed of developments through the Delacombe Community Newsletter.

The Delacombe Chairs Forum meets regularly and will continue to listen to the community about emerging issues and look for opportunities to initiate projects that make Delacombe a better place to live, work and learn.

